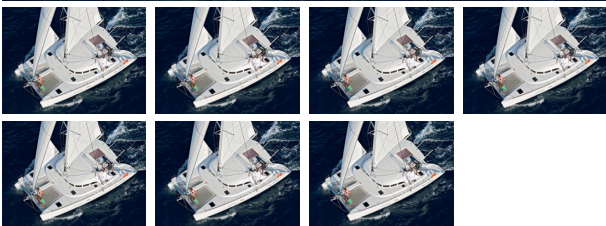


Lagoon

LAGOON 380 S2



Marke	Lagoon
Modell	LAGOON 380 S2
Bootstyp	Doppelkiel
Baujahr	2007
Zustand	in Charter gelaufen
Liegeplatz	Kroatien
Hafenplatz	Croatia - Yachtbrokermallorca
Anzahl Kabinen	4
Anzahl Betten	8
Rumpfmateral	Aluminium
Aufbaumaterial	Aluminium
Länge	11,5
Breite	6,53
Gewicht	7260
min. Tiefgang	1,15
Motor	YANMAR
Anzahl Motoren	2 á 30 PS (22 KW)
Kraftstoffart	Diesel
Preis Inland	183.000,00 €
MwSt	zzgl. MwSt

Beschreibung

RIG SAILS Anodized aluminium mast m deck stepped with mainsail track and cars Single spreader rig Anodized aluminium boom hull-mounted shroud chain plates crossbeam-mounted forestay chain plate genoa tracks running back to the helm station on port genoa cars with adjustable fairleads WINCHES all self tailing genoa winch STC on roof halyard winch STC on roof winch handle winch handle holders SAILS sail area m MAINSAIL fully battened system sail area m sq f and battens JIB furling system sail area m sq ft with UV protective band ENGINE COMPARTMENT Access from the hatch on transom ENGINES x YANMAR kW diesel Engine cut-off in cockpit Dual-lever engine control at helm station Engine air intake in transom Engine blower Seawater filter Fuel filter separator Fuel tank capacity x l x gal HEATING system diesel fired warm air heating ELECTRICAL SYSTEM Main v electrical panel circuits Voltmeter circuit breakers engine batteries v Amp house batteries v Amp electrical fuse and distribution panel voltmeter and tank gauges V shore power supply Battery charger Navigation and Deck-light WATER PUMBING x Fresh water tanks l each hot cold pressurized water system electric shower sump pumps manual and electric bilge pump cockpit shower holding tank fitted NAUTIC NAVIGATION cockpit with wheel steering helm station with Compass Log speed echo sounder wind instrument GPS Plotter RAYMARINE E VHF radio with DSC antenna at mast top NAVTEX receiver AUTOPILOT SAFETY EQUIPMENT VARIOUS electrical Anchor Windlass V Watt Anchor chain and spare anchor with chain Fire extinguisher Safety equipment fog horn first aid kit etc emergency tiller fenders warps ropes mooring lines boats hook BIMINI sun awning Davits inflatable dinghy outboard engine HULL DECK Composition polyester and vinylester resin osmotic barrier Foam sandwich hull construction white gelcoat Hull bottom in solid GRP Balsa core deck and nacelle construction with polyester and vinylester resin Solid one-piece counter mold Laminated wooden bulkheads mooring cleats

Lagoon

LAGOON 380 S2

Bow trampoline with knot-less nylon netting Stainless steel stern pulpits with stern running light and horseshoe by mount Aluminium stanchion bases Double stainless steel lifelines Stainless steel roof-mounted handrails Lifeline gates COCKPIT Large cockpit functional as deck salon direct access from port transom Self-draining cockpit Steering station on roof bulkhead engine controls engine panels compass room for electronics Double helmsman seat with seat and back starboard made Steering system by cable steering wheel with brake Epoxy glass rudders and shafts Emergency tiller Removable polyester cockpit table U shape cockpit seat with storage Gas storage TRANSOMS Direct access to water port side Deck shower cold water on port side Stainless steel swim ladder on port side Rubber transom rubrails ACCOMMODATION LAYOUT cabins berths x heads compartment BOW COMPARTMENT Access from deck through hatch General specifications Interior woodwork in marine plywood and light oak alpi with horizontal grain Synthetic wenge non-skid for the wood floor Main salon Vast main salon with panoramic view and wide bay sliding door with lock Standing headroom m for ward and m aft V spotlights Bench seating for persons Removable large varnished table that can be changed with the large cockpit table Storage compartments under bench seats Galley Up headroom m V spotlights Laminated countertop with wood fiddle and x sinks burner stove oven Cutlery drawer Cupboard under sink Storage compartment in central bench seat Electrical fridge V litres Overhead storage Opening sliding window Starboard Cabin Access through companionway with door Standing headroom m Large cabin with chest of drawers along side gangway V spotlights bed reading lights Numerous storage compartments Window blinds Double berth x m Storage without doors under the berth Large fixed hull window opening deck hatch opening porthole Navigation station Standing headroom m Panel for navigation instruments Navigation table with hinged lid V spotlights Port and starboard side washroom Standing headroom m V spotlights Full size manual marine toilet Fiberglass sink with cupboard and mirror wide shower compartment and integral sink unit diamond non-skid pattern opening deck hatch Holding tank with gravity drain deck pump out Port aft cabin Standing headroom m V spotlights Double berth m x m reading V lights Hanging locker Storage locker with shelves Access to escape hatch Window blinds Storage under bed without doors opening deck hatch opening porthole Large hull fixed window Port forward cabin Standing headroom m V spotlights Trapezoidal berth m x m m wide Storage under berth without doors hanging locker cupboard with shelves Window blinds opening deck hatch opening porthole Large hull fixed window Charter version cabins washrooms Same as owner s version except for starboard hull port side is identical ENTERTAINMENT Radio CD MP player loud speakers at saloon cockpit

Details

Kocher Gas 2-flammig	Spüle	Kühlschrank el.
WC manuell + Waschbecken + Dusche	Selbststeueranlage	Echolot
Sumlog	Kompass	GPS
Autopilot	Kartenplotter	UKW Funk
Windmessenanlage	Bimini-Top	Landanschluss 220 Volt
Batterie	Batterieladegerät	Batterie-Hauptschalter
Anker mit Kette	Ankerkasten	Bug-Ankerwinde el.
Lenzpumpe	Decksluke	Badeplattform integriert
Badeleiter	Seereling	Bugkorb
Heckkorb	Druckwasseranlage	Warmwasseranlage
HeckduscheWarmKalt	Bilgepumpe mechanisch	Bilgepumpe elektrisch
Feuerlöscher	Heizung Warmluft	Radio
CD-Player	Polsterbezüge Stoff	Cockpittisch
weitere Extras	Slooptakelung	Rollfockeinrichtung



Lagoon

LAGOON 380 S2

Details